



iS CLINICAL





cleanse

## CLEANSING COMPLEX

**RESURFACING, CLEARING, DEEP-CLEANSING**

Key Ingredients:  
White Willow Bark Extract, Sugar Cane Extract,  
Chamomile Extract, Centella Asiatica

This award-winning lightweight daily cleansing gel thoroughly cleanses the skin without stripping or drying. This multi-tasking treatment minimizes the appearance of pores, removes makeup, helps control breakouts, and is excellent for shaving. CLEANSING COMPLEX is good for all ages, skin types and genders.





treat

## ACTIVE SERUM

**AGE-DEFYING, CLEARING, BRIGHTENING**

Key Ingredients:

Sugar Cane Extract, Bilberry Extract, White Willow Bark Extract, Arbutin, Mushroom Extract

### CLINICALLY PROVEN RESULTS

#### AGE-DEFYING

**65%**  
reduction in  
the appearance of  
fine lines & wrinkles



BEFORE



AFTER 12 WEEKS

#### ANTI-BLEMISH

**94%**  
reduction in  
blemishes



BEFORE



AFTER 12 WEEKS

#### BRIGHTENING

**57%**  
reduction in  
uneven skin tone



BEFORE



AFTER 12 WEEKS

The ultimate multi-tasking treatment serum; ACTIVE SERUM is clinically proven to safely improve the appearance of fine lines and wrinkles, breakouts, and discoloration. Great for all skin types, ages, and genders.





treat

## Genexc<sup>®</sup> SERUM

with Extremozyme<sup>®</sup> Technology 

**PROTECTIVE, REGENERATIVE, AGE-DEFYING**

### Key Ingredients:

Extremozymes<sup>®</sup>, L-Ascorbic Acid, Hydrolyzed Eruca Sativa Leaf, Terminalia Ferdinandiana Fruit (Kakadu Plum) Extract, Mixed Fruit Acids, Superoxide Dismutase (SOD)

The future of skincare has arrived. One of our most powerful antioxidants featuring 20% L-Ascorbic Acid; this powerful lightweight serum is clinically proven to “message” your genes to “return to youth.” The appearance of fine lines, wrinkles and discoloration improves as your complexion visibly transforms; revealing a more healthy, luminous, and youthful appearance.



treat

## PRO-HEAL SERUM® ADVANCE+®

**RESTORATIVE, SUPER ANTIOXIDANT, REPARATIVE**

Key Ingredients:

Vitamin C, Vitamin E, Vitamin A, Olive Leaf Extract,  
Mushroom Extract

This rich lightweight serum features a powerful combination of Vitamin C (L-Ascorbic Acid), Vitamin E, Vitamin A, and Olive Leaf Extract. PRO-HEAL SERUM ADVANCE+ helps soothe the appearance of red, irritated skin as it provides the ultimate antioxidant protection. Excellent for helping to calm visible redness and inflammation associated with rosacea and blemishes. Great for all ages, skin types and genders.





treat

## SUPER SERUM ADVANCE+

**AGE-DEFYING, SUPER ANTIOXIDANT, BRIGHTENING<sup>®</sup>**

Key Ingredients:

L-Ascorbic Acid, Copper Tripeptide Growth Factor, Centella Asiatica, Arbutin & Mushroom Extract,

### CLINICALLY PROVEN RESULTS

Improvement in healing of a surgical wound was evaluated using SUPER SERUM ADVANCE+



3 MONTHS - CONTROL



6 MONTHS - CONTROL



BEFORE



AFTER 6 MONTHS

SUPER SERUM ADVANCE+ is a scientifically advanced, clinically proven formula that, for the first time, combines a 15% concentration of our next generation L-ascorbic acid (Vitamin C) with a bioidentical Copper Tripeptide Growth Factor. SUPER SERUM ADVANCE+ also contains powerful botanical antioxidants and safe skin brighteners.



treat & hydrate

## SHEALD™ RECOVERY BALM

**PROTECTIVE, SOOTHING, NOURISHING**

Key Ingredients:

Hyaluronic Acid, Glycerin, Vitamin E, Oat Kernel Extract,  
Vitamin B5

SHEALD RECOVERY BALM is an ultra-rich protective formula that dramatically replenishes hydration to dry, sensitive, or severely compromised skin (including burns and open wounds). This bio-nutrient and antioxidant rich balm helps support optimal skin barrier function while helping to soothe the discomfort of dry, distressed, and post-procedure skin. Excellent moisturizer for harsh cold and/or dry climates.





treat & hydrate

## WHITE LIGHTENING® COMPLEX

SAFE BRIGHTENING, HYDRATING, ANTIOXIDANT

Key Ingredients:

White Willow Bark Extract, Glycerin, Squalane, Imperata  
Cylindrica Root Extract, Sugar Cane Extract, Bilberry Extract

treat

## WHITE LIGHTENING® SERUM

TARGETED BRIGHTENING, REVITALIZING, FAST ACTING

Key Ingredients:

Norwegian Kelp Extract, Sugar Cane Extract, Bilberry Extract,  
Arbutin, Mushroom Extract

### CLINICALLY PROVEN RESULTS

WHITE LIGHTENING COMPLEX (AM) and  
WHITE LIGHTENING SERUM (PM) were used



BEFORE



AFTER 30 DAYS



BEFORE



AFTER 30 DAYS

Clinically proven high-performance brightening formulations that work well individually or as a powerful duo. Both the multi-tasking WHITE LIGHTENING COMPLEX and targeted booster WHITE LIGHTENING SERUM feature rare and powerful botanical extracts including Norwegian kelp, willow bark, bilberry, and mushroom that work synergistically to safely and effectively address visible skin discoloration as well as fine lines and wrinkles; resulting in a brighter, smoother, and more vibrant appearance.







treat & hydrate

## YOUTH EYE COMPLEX®

**SMOOTHING, HYDRATING, ILLUMINATING**

Key Ingredients:

Acetyl Octapeptide-3, Copper Tripeptide Growth Factor,  
Hyaluronic Acid, Pseudoalteromonas Ferment Extract

### CLINICALLY PROVEN RESULTS

Users show dramatic visible improvement in puffiness  
and periorbital wrinkling in the under-eye area.



BEFORE



AFTER 12 DAYS

Antioxidant-rich and hydroxy acid free, this clinically-proven regenerative eye treatment addresses visible signs of skin aging around the eyes including fine lines and wrinkles, dark under-eye circles, and puffiness. Provides both immediate and long-term results.





treat

## YOUTH SERUM<sup>®</sup>

**TIGHTENING, SMOOTHING, RESTORATIVE**

Key Ingredients:

Vitamin A, C & E Blend, Extremozymes<sup>®</sup>,  
Copper Tripeptide Growth Factor, Centella Asiatica

### CLINICALLY PROVEN RESULTS

Significant improvement in overall skin tone,  
texture & wrinkles



BEFORE



AFTER 4 WEEKS

YOUTH SERUM is designed to give skin the best of both worlds: immediate and long-term visible results. Immediate results come from advanced technologies that support healthy skin structures and instantly diminish the appearance of fine lines for a visibly firmed complexion. Meanwhile, YOUTH SERUM's safe, bio-identical growth factor helps visibly reduce fine lines and wrinkles long-term. Our patented Extremozyme<sup>®</sup> technology combined with a powerful blend of antioxidants, provides support against environmental aggressors. The result is a more youthful, vibrant, and resilient complexion.





treat & hydrate

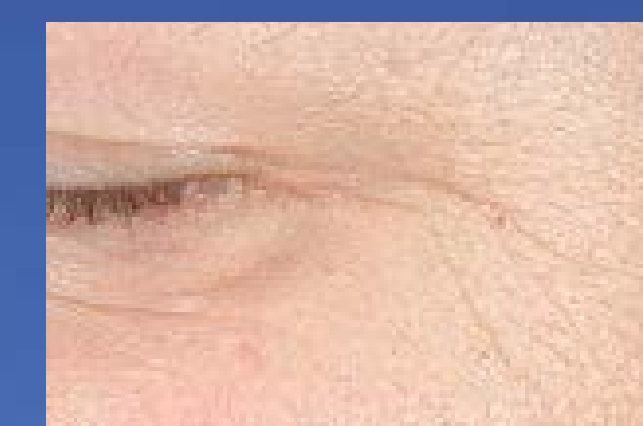
## YOUTH INTENSIVE CRÈME®

**AGE-DEFYING, HYDRATING, FIRMING**

Key Ingredients:

Copper Tripeptide Growth Factor, Superoxide Dismutase (SOD),  
Hyaluronic Acid, Vitamin C (Tetrahexyldecyl Ascorbate)

### CLINICALLY PROVEN RESULTS



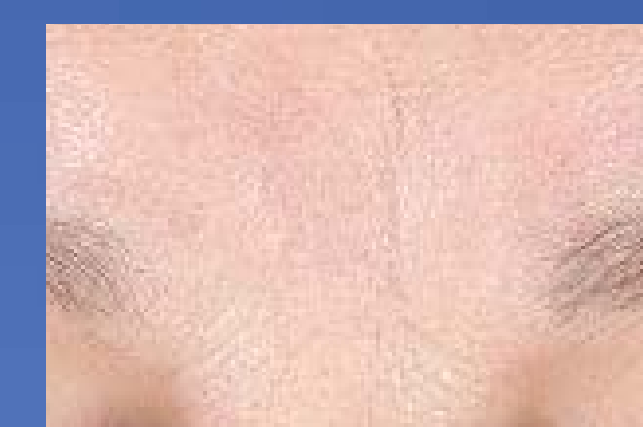
BEFORE



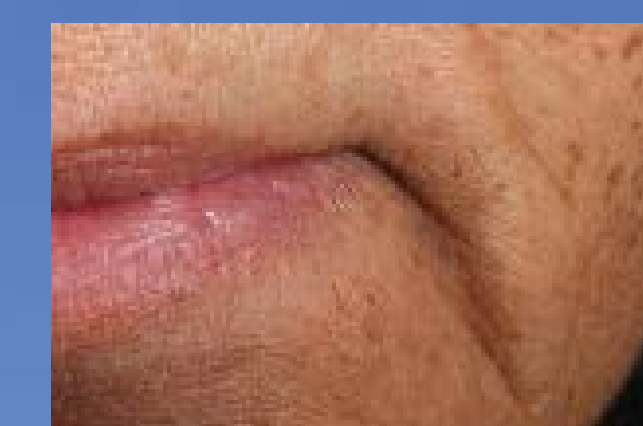
AFTER 1 DAY



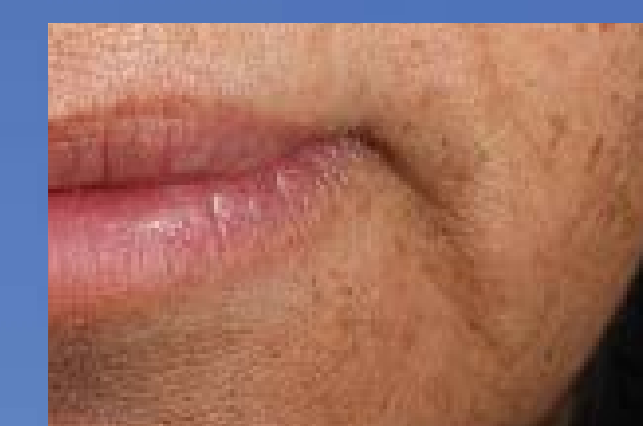
BEFORE



AFTER 7 DAYS



BEFORE



AFTER 28 DAYS

Powerful and rare antioxidants including a unique form of Vitamin C are combined in a luxurious age-defying formula that is clinically proven to provide 24-hour hydration as it diminishes the look of fine lines and wrinkles, the loss of firmness, and discoloration.





treat  
HYDRA-INTENSIVE COOLING<sup>®</sup>  
REINVIGORATING, REFRESHING, SOOTHING

Key Ingredients:  
Resveratrol, Japanese Green Tea, Hyaluronic Acid,  
Aloe Barbadensis Leaf Juice

HYDRA-INTENSIVE COOLING MASQUE is a rich, luxurious cooling treatment designed to reinvigorate, refresh and provide soothing hydration. This professional strength formula (available for home-use) features powerful botanical antioxidants, which are perfectly balanced with botanically sourced hyaluronic acid-nature's most powerful hydrator. Skin will appear luminous, fresh and hydrated. This lightweight gel masque helps nurture and quench dry, dehydrated and sensitive-feeling skin with a cool burst of refreshment.





hydrate & treat

## LIP DUO®

### TWO SIMPLE STEPS TO RENEWED LIPS

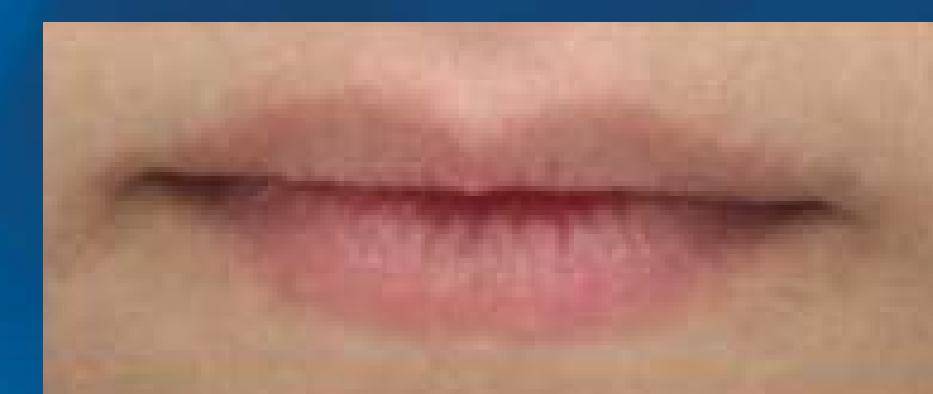
Key Ingredients:

Vitamin E, Sucrose, Extremozymes®, Vitamin C  
(Tetrahexyldecyl Ascorbate)

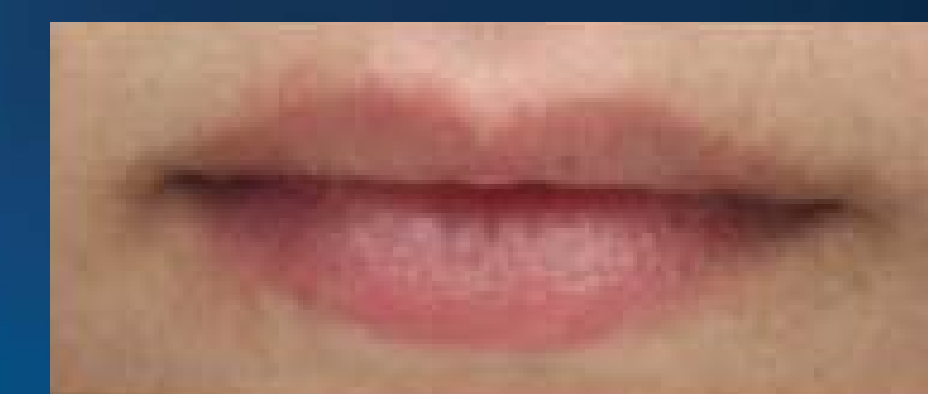
### CLINICALLY PROVEN RESULTS

# 100%

of subjects were satisfied or very satisfied with  
their LIP APPEARANCE & COLOR after 45 days



BEFORE



AFTER 45 DAYS

LIP POLISH is a gentle and effective scrub with powerful antioxidants of Vitamins C and E, blended with intensely rich botanical butters encourages exfoliation and helps to smooth and hydrate lips, leaving them with a healthy glow.

YOUTH LIP ELIXIR is a luxurious and highly moisturizing elixir that visibly smooths and hydrates as it enhances, softens, and plumps the overall appearance of the lips. This innovative formula combines the purest and most powerful clinically proven botanical extracts and antioxidants including: Hyaluronic Acid, Vitamins C, E, & B5 Shea & Cocoa Butter, and our proprietary combination of Extremozymes which provide unprecedented multi-level protection against dangerous environmental aggressors.



hydrate & treat  
HYDRA-COOL SERUM®

**HYDRATING, SOOTHING, ANTI-BLEMISH**

Key Ingredients:  
Hyaluronic Acid, Vitamin B5, Centella Asiatica, Mushroom Extract

HYDRA-COOL SERUM is designed to hydrate, soothe, and visibly rejuvenate the skin. This rich yet lightweight serum is formulated with pharmaceutical-grade potent botanical extracts which provide essential bio-nutrients and multi-level antioxidant protection. HYDRA-COOL SERUM is designed for all genders, skin types and for all ages. This gentle penetrating serum is great for anytime hydration, post sunburn, after shaving, and helping to reduce the appearance of breakouts.







hydrate & treat

## REPARATIVE MOISTURE EMULSION with Extremozyme® Technology

**RESTORING, HYDRATING, SMOOTHING**

Key Ingredients:

Extremozymes®, Hyaluronic Acid, Superoxide Dismutase (SOD),  
Copper Tripeptide Growth Factor

The professional makeup artists favorite; this luxurious lightweight cream complex not only provides unsurpassed levels of hydration; REPARATIVE MOISTURIZING COMPLEX is a powerful age-defying formula featuring extremozymes which are clinically proven to help prevent DNA damage.





protect, treat, hydrate

## EXTREME PROTECT® SPF 30 with Extremozyme® Technology

**HYDRATING, RESTORATIVE, ULTIMATE PROTECTION**

Key Ingredients:

Extremozymes®, Encapsulated Octinoxate, Zinc Oxide, Vitamin E

protect

## ECLIPSE SPF 50+

ECLIPSE SPF 50+ (PerfecTint® Beige)

**ULTRA SHEER, BROAD SPECTRUM, SPF 50+**

Key Ingredients:

Titanium Dioxide, Zinc Oxide, Vitamin E

Our broad-spectrum UVA/UVB sunscreen formulas help prevent sunburn, sun damage and the visual signs of photoaging, all while providing a luxurious feel and non-greasy finish.

Ground-breaking EXTREME PROTECT SPF 30 combines encapsulated organic sunscreen actives with transparent zinc oxide, powerful antioxidants and extremozymes which are clinically proven to help prevent DNA damage that can lead to skin cancer.

ECLIPSE SPF 50+ and ECLIPSE SPF 50+ PerfecTint Beige feature non-penetrating transparent zinc oxide and titanium dioxide combined with antioxidants.



## CREATE PERFECT SKIN IN FOUR EASY STEPS



Exclusive Distributor :

**REDO**  
M A R K E T I N G  
Your Aesthetic Business Solutions Provider

 /REDOMARKETING    @REDOMARKETING    @ www.redo.com.my/    +6 016 206 5890

All right reserved by REDO MARKETING SDN BHD 2020